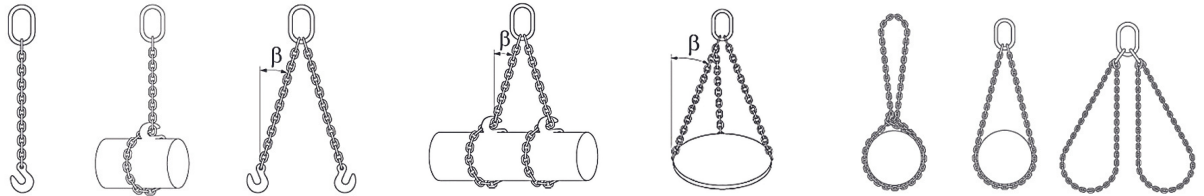


Ísfell's Chain Load Capacity Table

Maximum weight in tonnes, WLL (Working Load Limit)

Safety Factor

4



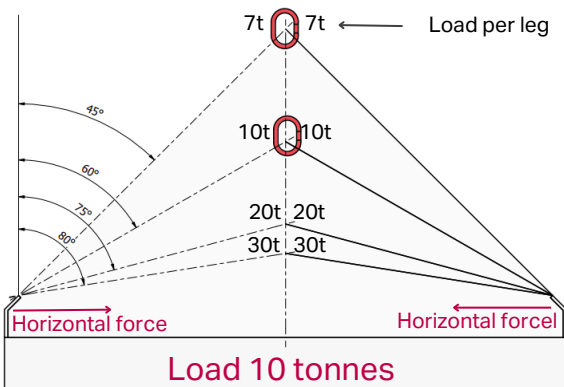
Angle β			0°<45°	45°<60°	0°<45°	45°<60°	0°<45°	45°<60°		0°<45°	45°<60°	
Load Factors	1	0,8	1,4	1	1,12	0,8	2,1	1,5	1,6	1,4	2,1	
Chain diameter ϕ mm	Grade	WLL in tonnes										
6	10	1,5	1,2	2,1	1,5	1,7	1,2	3,2	2,3	2,4	2,1	3,2
7	10	2,0	1,6	2,8	2,0	2,2	1,6	4,2	3,0	3,2	2,8	4,2
8	10	2,5	2,0	3,5	2,5	2,8	2,0	5,3	3,8	4,0	3,5	5,3
10	10	4,0	3,2	5,6	4,0	4,5	3,2	8,4	6,0	6,4	5,6	8,4
13	10	6,7	5,4	9,4	6,7	7,5	5,4	14,1	10,1	10,7	9,4	14,1
16	10	10,0	8,0	14,0	10,0	11,2	8,0	21,0	15,0	16,0	14,0	21,0
19	10	14,0	11,2	19,6	14,0	15,7	11,2	29,4	21,0	22,4	19,6	29,4
22	10	19,0	15,2	26,6	19,0	21,3	15,2	39,9	28,5	30,4	26,6	39,9
23	10	21,0	1,8	29,4	21,0	23,5	16,8	44,1	31,5	33,6	29,4	44,1
26	10	26,5	21,2	37,1	26,5	29,7	21,2	55,7	39,8	42,4	37,1	55,7
32	10	40,0	32,0	56,0	40,0	44,8	32,0	84,0	60,0	64,0	56,0	84,0

Standards

All lifting equipment from Ísfell is manufactured to the standard of EN 818 and EN 1677, lifting chains according to EN 818-2 and accessories according to EN 1677. Ísfell's Chain Load Capacity Table is in compliance with WLL according to EN 818-4 with safety factor of 4:1.

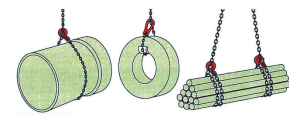
WARNING!

Ensure the load never exceeds the WLL that is printed on the load capacity tag.
Ensure that the angle β never exceeds 60° from a horizontal line.



The diagram above shows how the strain on a two sling chain lifting 10 tonnes multiplies as the load angle increases.

ATH that 60° is the largest load angle permitted.



Choke hitch

Be cautious when lifting using a nose pull. WLL decreases by 20% when using a nose pull.

Storage

Well organized storage increases the lifetime of the lifting chains. Easy access and clear information decreases the risk of mistakes.

Regular inspections

Regular inspections provides the users of the equipment increased assurance of its safety. Our experts are Ísfell provide a comprehensive inspection service on lifting equipment.

If the lifting equipment is used under difficult conditions such as high temperatures, imbalanced load, on sharp corners, or when there is a possibility of a sudden shock loads, it is not permitted to use the equipment at full load limit. Specialized equipment is available for lifting at less than 45° and therefore increase the WLL of the lifting equipment.

Ísfell ehf is a member of the Lifting Equipment Engineers Association. LEEA is established across the world as the leading trade association for all those involved in the lifting industry. They are leading in accrediting companies that use and manufacture lifting equipment.

